



# CB600 Specification

ClearlyBetterScents.com 888.770.3434

## 1.Appearance



Front



Side

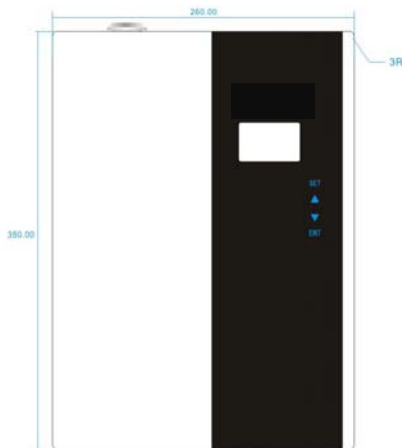


Back

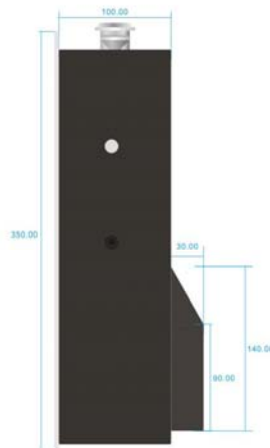


Top

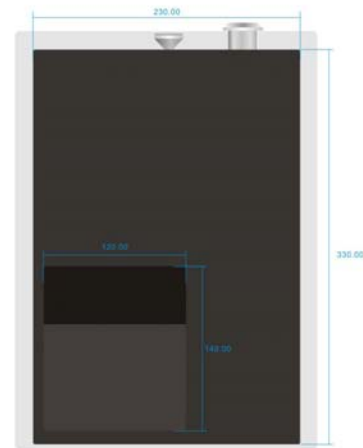
## 2.Dimension



F



R



B

## 3.Specification

Input voltage: AC100V-240V

Power:20W

Oil bottle capacity: 1000ml

Net Weight: 5.10kgs

Consumption: 0.5ml/hr-5.0ml/hr

Material: Iron & Acrylic

Accessories equipped: Soft tube,empty oil bottle,power code,product manual,quick coupling

Packaging: Each unit and the accessories be packed in a carton(44\*42\*22cm). 3 small cartons be packed in a big carton(45\*63\*44cm).



# CB600 Specification

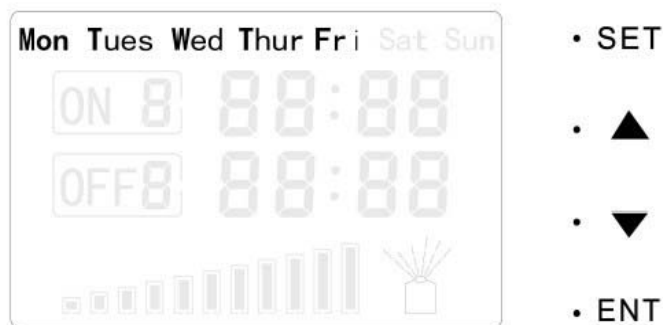
ClearlyBetterScents.com 888.770.3434

## 4.Oil consumption

CB 600 (1000ml bottle)										
	G1	G2	G3	G4	G5	G6	G7	G8	G9	G10
Consume (ml/h)	0.50	1.00	1.50	2.00	2.50	3.00	3.50	4.00	4.50	5.00

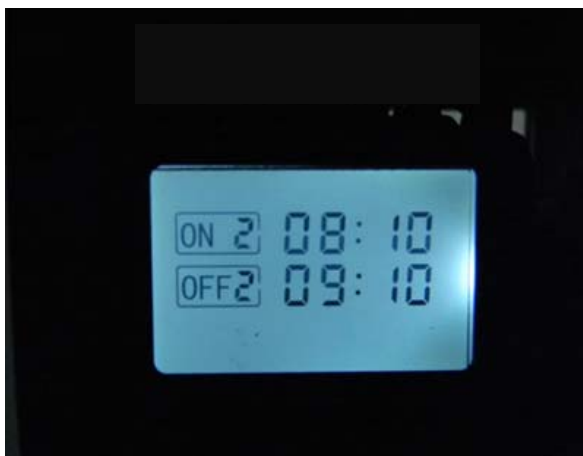
## 5.Operation

### A. Working day setting



Touch button **SET** once for day setting; touch **▲** to adjust machine working day, Sunday and Saturday can be turn on/ off depends on you, **ENT** to confirm.

### B. Working time setting



Touch button "**SET**" twice for working period setting, touch "**SET**" again for next working period setting, totally 9 working periods are available.

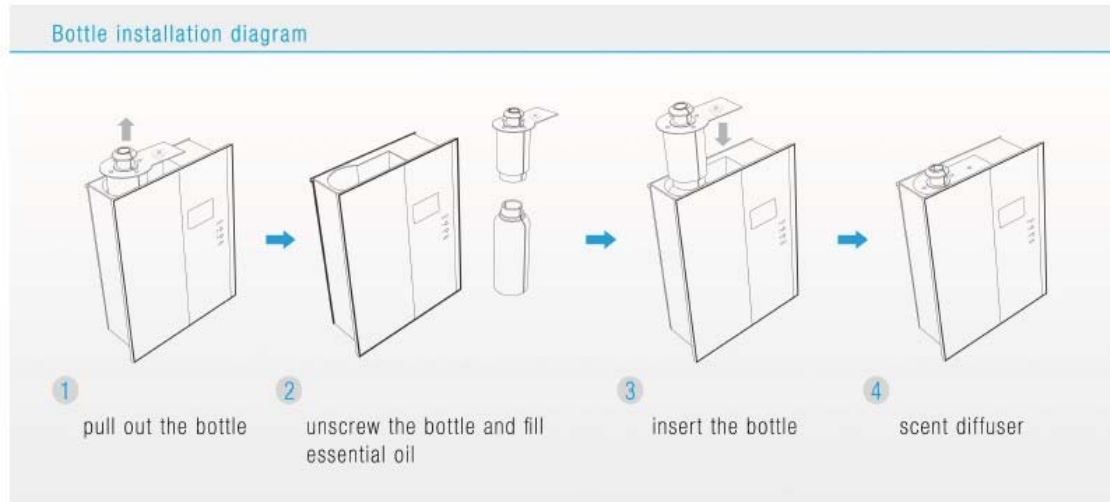
Touch button "**SET**" twice [or more] to go into working period setting, [the first working period--default setting is 07:00, power off--default setting is 21:00, other working periods are 00:00], touch "**DOWN**" to move to the setting number, touch "**UP**" to revise the number, by parity of reasoning, and then press "**ENT**" to confirm.



# CB600 Specification

ClearlyBetterScents.com 888.770.3434

## 6. Refill fragrance



## 7. Method of application

- A. Tabletop placement.
- B. Connect with HVAC

